

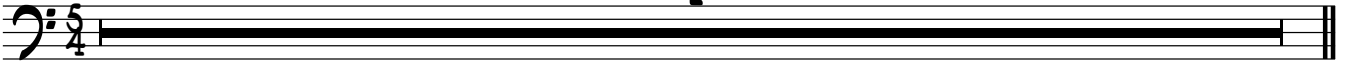
WORLD OF DISTRACTIONS

ELECTRIC BASS

LUIS VERDE

♩=178

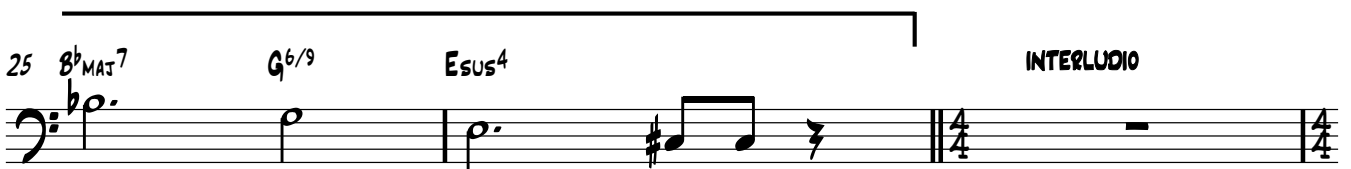
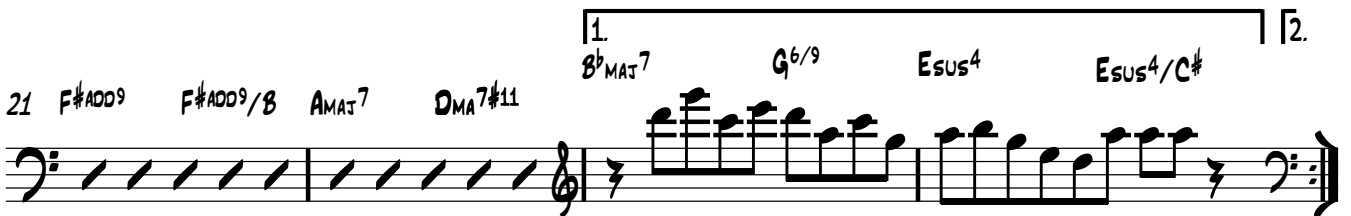
4



SOLO OPEN



A



28 F-7(b6) D-7 B^b-7ADD4 E^bSUS4/D E-7 F-7(b6) C#-7 A^b-7(d11) B-7(d11)

32 A^b-7 F-7 D-7(d11) B^bMAT7 A^bMAT7(6/9) F#-7

B

36 F- D A^b7(b9) C#-FRIGIO

40 F- PLAY SECOND TIME ONLY D A^b7(b9) C#-FRIGIO X4

PLAY BOTH TIMES

SOLOS

F- D^o7#9 E^bSUS4 C#-FRIGIO

F#SUS2 C/E F#SUS2/D# B^bSUS4/F#

F-7(d11) E-7 E^b G^b+7

F- D^o7#9 E^bSUS4 C#-FRIGIO

F#sus2 C/E F#sus2/D# Bsus4/F#

F-7(d11) E-7 Eb Gb+7

HEAD OUT

F#ADD9 F#ADD9/B AMAJ7 DMA7#11 BbMAJ7 G6/9 Esus4 Esus4/C#

F#ADD9 F#ADD9/B AMAJ7 DMA7#11 BbMAJ7 G6/9 Esus4

CODA

F-7(b6) D-7 Bb-7ADD4 Eb sus4/D E-7 F-7(b6) C#-7

C#-7 D-7(b6) A#-7 F7

ACCEL.