

MUSA INEXPERTA

BASS

LUIS VERDE

♩ = 88 INTRO



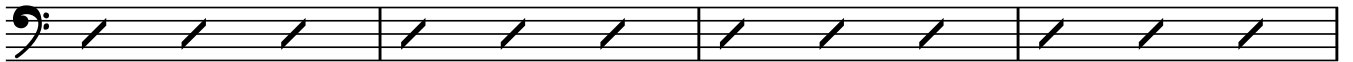
5 (ENTRA BATERIA)



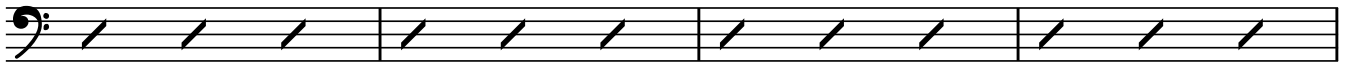
9



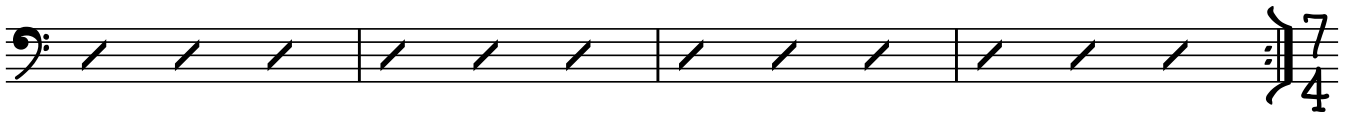
13



17



21



25

♩ = ♩

E7 E^b7(b13) G-7 E^{MA}7/G[#] E7 E^b7 G-7 E7(b13)/G[#]

25



29

E-7 E^b7(13) G-7(11) E7/G[#] E-^{MA}7(b6) E^b7(13) G-7(11) E7^b9/G[#]



mf

VS.

BASS

2

33 AADD⁹/C# FMAJ7#11 GbMAJ7#11 Ab-MAJ7 G-MAJ7/A G7/A



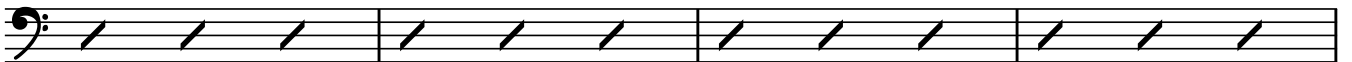
37

♩=88

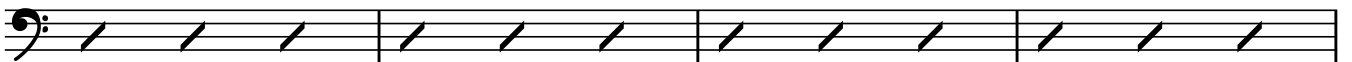
37



41



45



49

FIN



53

SOLOS
♩=176

53 D7sus4 F7sus4 A7sus4 Db7sus4 Ab7sus4 D.S. TO FIN

