

LEVIATÁN

DOUBLE BASS

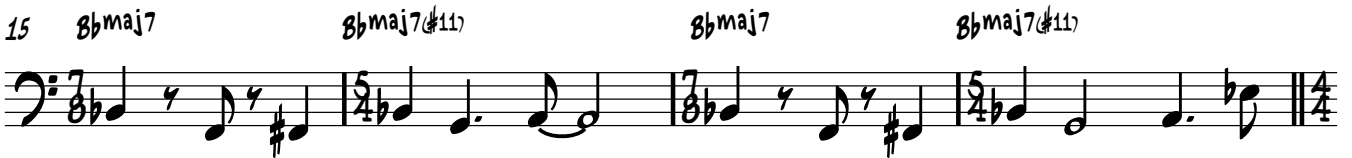
LUIS VERDE

INTRO

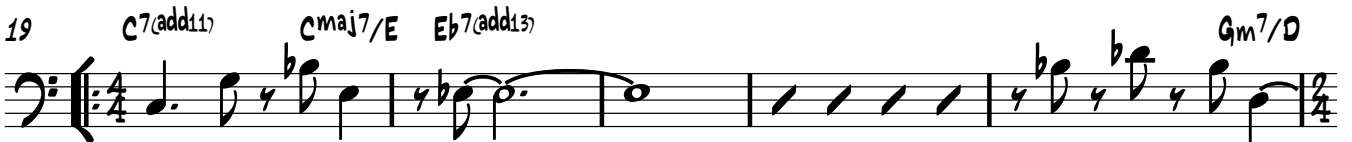
♩=166



7



19 OPEN SOLOS



53 C7(add11) Eb7(add13) Db6(#11) Gm7/Eb Ab(add9)

58

58 C7(add11) Cmaj7/E Eb7(add13) Gm7/D Db6(#11) Cmaj7(add11) Gm7/D

62 Gm7/Eb E7(SUS4) C7(add11) Cmaj7/EEb7(add13) Gm7/D Db6(#11) Cmaj7(add11) Gm7/D

68 CODA

67 Gm7/Eb E7(SUS4) C7(#11)/E Cmaj7(add9) D% Bm(b6)

70 Am7/G F(SUS2) Em(b6) Eb6 Gm11/D C#(5) Abmaj7(#11)

RIT.